



GIGABIT POE SWITCH MANAGED Rack-Mount

# Quick Installation Guide

# RGPS-7084GP-P

# Managed Gigabit PoE Ethernet Switch

## Introduction

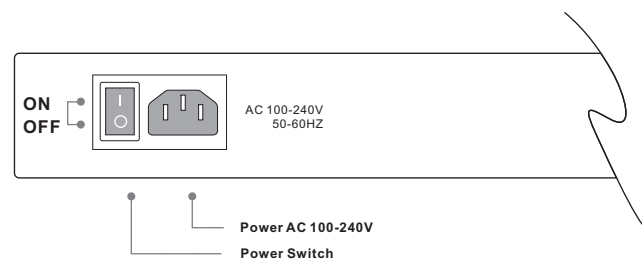
**RGPS-7084GP-P** is managed redundant ring PoE Ethernet switch with 8x10/100/1000Base-T(X) P.S.E. ports and 4x1000Base-X SFP ports. **RGPS-7084GP-P** provides advanced IP-based bandwidth management which can limit the maximum bandwidth of each IP device. User can configure IP camera and NVR with more bandwidth and limit the bandwidth of other device. **RGPS-7084GP-P** also supports application-based QoS which can set highest priority for data stream according to TCP/UDP port number. **RGPS-7084GP-P** also provides advanced DOS/DDOS auto prevention. If there is any IP flow become big in short time, **RGPS-7084GP-P** will lock the source IP address for certain period of time to prevent the attack. It's hardware-based prevention so it can prevent plenty of DDOS attacks immediately and completely. **RGPS-7084GP-P** also support Power over Ethernet, a system to transmit electrical power up to 30 watts, along with data, to remote devices over standard twisted-pair cable in an Ethernet network. Each **RGPS-7084GP-P** switch has 8x10/100/1000Base-T(X) P.S.E. (Power Sourcing Equipment) ports. P.S.E. is a device (switch or hub for instance) that will provide power in a PoE connection. All function of **RGPS-7084GP-P** can be managed centralized and Web-based, Telnet, Console (CLI). Therefore, the switch is one of the most reliable choice for highly-managed and Gigabit Fiber Ethernet and PoE application.

## Features

- Supports O-Ring (recovery time < 30ms over 250 units of connection), MSTP/RSTP/STP (IEEE 802.1s/w/D) for Ethernet Redundancy
- Supports Jumbo frame up to 9K Bytes
- Supports IP-based bandwidth management
- Supports application-based QoS management
- Supports IP police security function
- Supports DOS/DDOS auto prevention
- Supports LLDP Protocol
- 8 port P.S.E. fully compliant with IEEE802.3at standard, provide up to 30Watts per port
- Internal Power supply included
- IGMP v2/v3 (IGMP snooping support) for filtering multicast traffic
- Supports SNMP v1/v2c/v3 & RMON & 802.1Q VLAN Network Management
- Support ACL, 802.1x User Authentication for security
- Multiple notification for warning of unexpected event
- Windows utility (Open-Vision v3.0) support centralized management and configurable by Web-based interface, Telnet and Console (CLI)

## Product Interface

### Back View

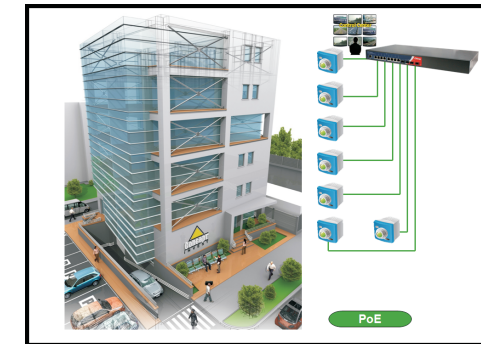


## Specifications

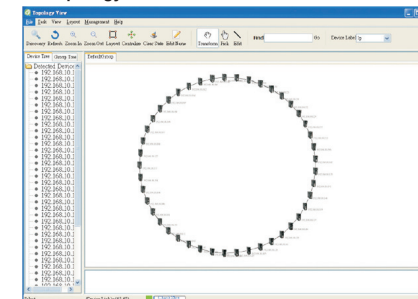
ORing Switch Model	RGPS-7084GP-P
<b>Physical Ports</b>	
10/100/1000 Base-T(X) Ports in RJ45 Auto MDI/MDIX with P.S.E	8 (30Watts per port)
1000Base-X with SFP port	4
<b>Technology</b>	
Ethernet Standards	IEEE 802.3 for 10Base-T IEEE 802.3u for 100Base-TX IEEE 802.3z for 1000Base-X IEEE 802.3ab for 1000Base-T IEEE 802.3x for flow control IEEE 802.3ad for LACP (Link Aggregation Control Protocol) IEEE 802.1D for STP (Spanning Tree Protocol) IEEE 802.1p for COS (Class of Service) IEEE 802.1Q for VLAN Tagging IEEE 802.1w for RSTP (Rapid Spanning Tree Protocol) IEEE 802.1x for Authentication IEEE 802.3at PoE specification (up to 30 Watts per port for P.S.E.)
MAC Table	8192 MAC addresses
Priority Queues	4
Processing	Store-and-Forward
Switch Properties	Switching latency: 7 us Switching bandwidth: 24Gbps Max. Number of Available VLANs: 256 IGMP multicast groups: 128 for each VLAN Port rate limiting: User Define
Jumbo frame	Up to 9K Bytes
Security Features	Device Binding security feature Enable/disable ports, MAC based port security Port based network access control (802.1x) VLAN (802.1Q) to segregate and secure network traffic Radius centralized password management SNMPv3 encrypted authentication and access security
Software Features	STP/RSTP/MSTP (IEEE 802.1D/w/s) Redundant Ring (O-Ring) with recovery time less than 20ms over 250 units TOS/Diffserv supported Quality of Service (802.1p) for real-time traffic VLAN (802.1Q) with VLAN tagging and GVRP supported IGMP Snooping IP-based bandwidth-management Application-based QoS management DOS/DDOS auto prevention Port configuration, status, statistics, monitoring, security DHCP Client/Server
Network Redundancy	O-Ring, STP / RSTP, MSTP
RS-232 Serial Console Port	RS-232 in RJ45 connector with console cable. 115200bps, 8, N, 1
<b>LED Indicators</b>	
Power indicator (PWR)	Green : Power Indicator
System ready indicator (STA)	Green : Indicate system ready. Blinking for system is upgrading firmware.
R.M. indicator (R.M)	Green : Indicate system operated in O-Ring Master mode
O-Ring indicator (Ring)	Green : Indicate system operated in O-Ring mode. Blinking to indicate Ring is broken.
System runnig indicator (RUN)	Green : System operated continuously
Reset To Default indicator (DEF)	Green : System reset to default configuration
PoE Indicator	Blue : PoE LED x 8
10/100/1000 Base-T(X) RJ45 Port indicator	Green for port Link/Act. Amber for Duplex/Collision
1000Base-X SFP Port Indicator	Green for port Link/Act.
<b>Power</b>	
Input power	AC 100~240V/AC, 50~60Hz
PoE output power	240 Watts max for -40°C~60°C ; Power derating 12W/°C for 60°C~70°C (120 Watts max at 70°C)
Power consumption(Typ.)	22 Watts (power device not included)
Overload current protection	Present
<b>Physical Characteristic</b>	
Enclosure	19 inches rack mountable
Dimension (W x D x H)	442.7(W) x 231 (D) x 44 (H) mm (17.46x9.09x1.73 inch)
Weight (g)	3554 g
<b>Environmental</b>	
Storage Temperature	-40 to 85°C (-40 to 185°F)
Operating Temperature	-40 to 70°C (-40 to 158°F)
Operating Humidity	5% to 95% Non-condensing
<b>Regulatory Approvals</b>	
EMI	FCC Part 15, CISPR (EN55022) class A
EMS	EN61000-4-2 (ESD), EN61000-4-3 (RS), EN61000-4-4 (EFT), EN61000-4-5 (Surge), EN61000-4-6 (CS), EN61000-4-8, EN61000-4-11
Shock	IEC60068-2-27
Free Fall	IEC60068-2-32
Vibration	IEC60068-2-6
Warranty	5 years

## Open-Vision

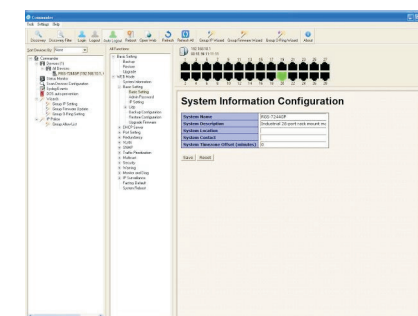
### Fiber Network connection



### Topology View



### Monitoring and Configuration interface



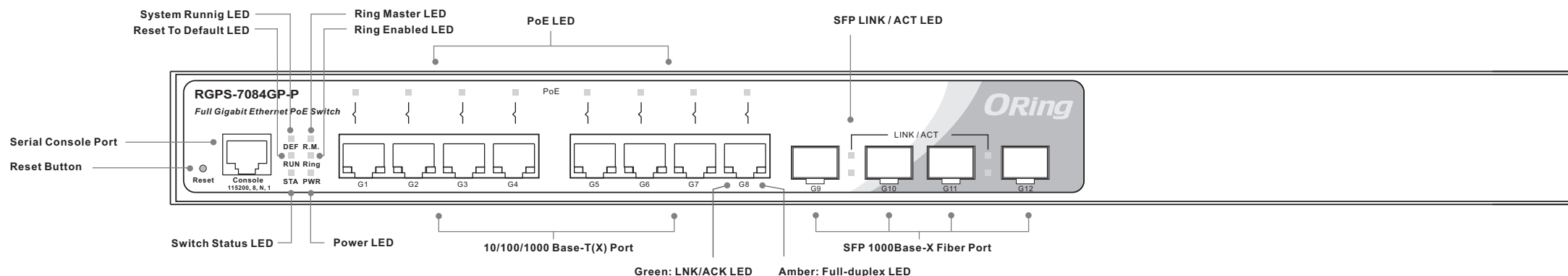
# Quick Installation Guide

## RGPS-7084GP-P

### Managed Gigabit PoE Ethernet Switch

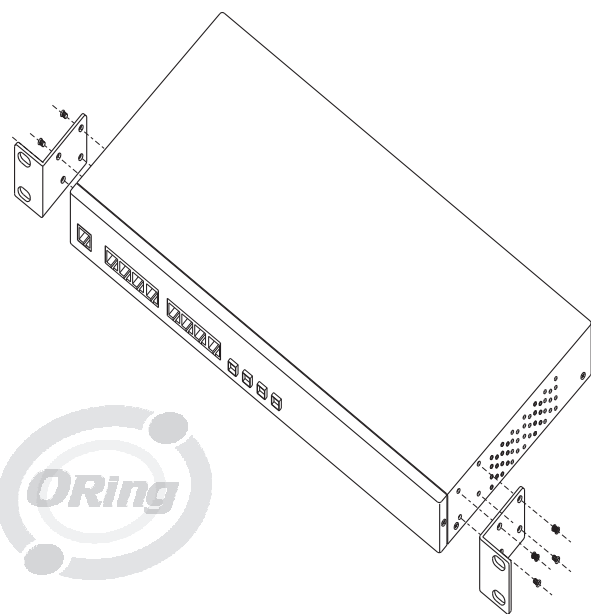
#### Front Panel

##### RGPS-7084GP-P



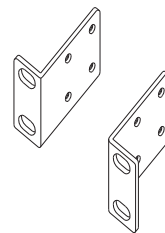
#### Installation

##### Rack-mounted Install Step

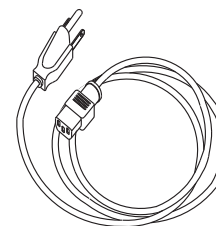


#### Accessory

① Rack-mounted kit (L&R)



② Power Cord



③ Flat Screw (M3X4)



④ Dust Cover (RJ-45)



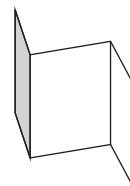
⑤ Dust Cover (SFP)



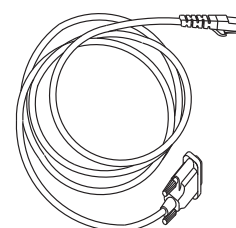
⑥ CD



⑦ QIG



⑧ Console Cable



#### Packing list

Model name	Model Description	Accessory
<b>RGPS-7084GP-P_US</b>	Industrial 12-port rack mount managed Gigabit PoE Ethernet switch with 8x10/100/1000Base-T(X) P.S.E. and 4x1000Base-X, SFP socket, power supply included, US power cord	⊗ X 2, ⊗ X 1, ⊗ X 8, ⊗ X 8, ⊗ X 4, ⊗ X 1, ⊗ X 1, ⊗ X 1
<b>RGPS-7084GP-P_EU</b>	Industrial 12-port rack mount managed Gigabit PoE Ethernet switch with 8x10/100/1000Base-T(X) P.S.E. and 4x1000Base-X, SFP socket, power supply included, EU power cord	⊗ X 2, ⊗ X 1, ⊗ X 8, ⊗ X 8, ⊗ X 4, ⊗ X 1, ⊗ X 1, ⊗ X 1

**ORing** ORing Industrial Networking Corp.

Copyright© 2012 ORing  
All rights reserved.

TEL: +886-2-2218-1066 Website: www.oring-networking.com  
FAX: +886-2-2218-1014 E-mail: support@oring-networking.com