

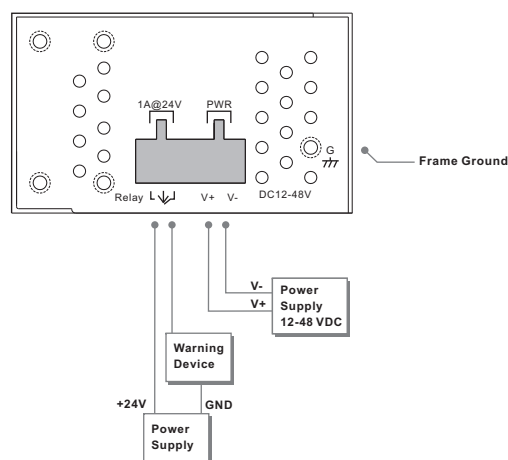
Introduction

IMG-111 Series is an innovative 1 port RS-232 M2M Gateway with 1 port 10/100Base-T(X) port. It could be configured to connect to the internet by dialing up built-in cellular modem to fulfill demands of various applications rapidly. In addition, **IMG-111 Series** can also transfer data into 5 host PCs simultaneously for backup purposes. Therefore, **IMG-111 Series** is one of the best solutions for applications of wireless and serial communication.

Features

- > Provide 1 port 10/100Base-T(X) port and 1 SIM card slot
- > 2G GSM/GPRS or 3.5G HSUPA Modem included
- > Support Open VPN, PPTP VPN
- > Support DHCP forwarding through PPTP function.
- > Support IPsec VPN
- > Update DNS Hostname: DDNS
- > Versatile modes & event alarm by e-mail.
- > Event warning by Syslog, Email, SNMP Trap, Relay output
- > Redundant multiple host devices:
- > 5 host devices: Virtual COM, TCP Server, TCP Client mode; UDP:4 IP Ranges
- > 12~48VDC power input on terminal block
- > Rigid IP-30 housing design
- > DIN-Rail and panel mounting enabled

Power Connection Guide

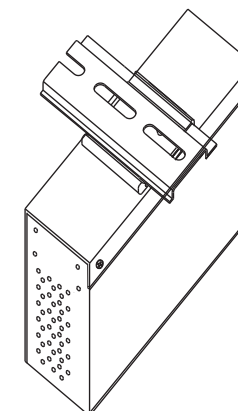
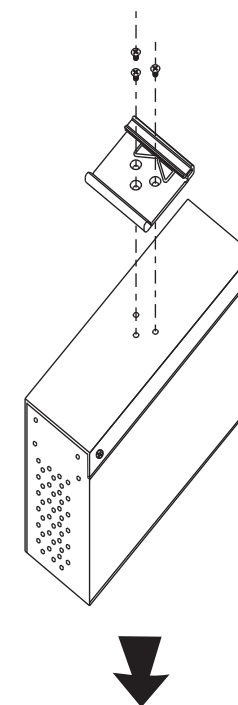


Specifications

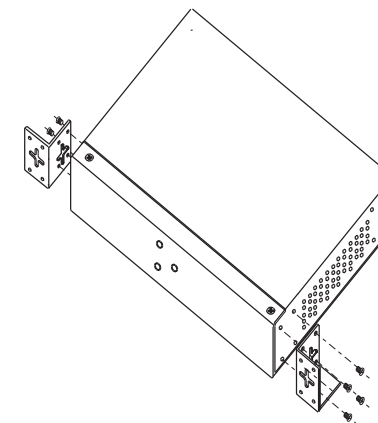
ORing M2M Model	IMG-111	IMG-111-2G
Physical Ports		
10/100 Base-T(X) Ports in RJ45 Auto MDI/MDIX	1	
SIM Card Slot	1	
Cellular Interface		
Cellular Standard	GSM / GPRS / EGPRS / EDGE / WCDMA / HSDPA / HSUPA	GSM / GPRS
Band Option	Dual-band : HSUPA 1900/2100 MHZ Quad-band : GSM / GPRS / EDGE 850/900/1800/1900 MHZ WCDMA / HSDPA 850/900/1900/2100 MHZ	Dual-band (Qual-band) GSM/GPRS 900/1800MHz or 900MHz/1800MHz/850MHz/1900MHz
Antenna Connector	Reverse SMA	
Antenna	GSM/DCS/UMT antenna x 1	
Serial Ports		
Connector	DB9 Male x 1	
Operation Mode	RS-232	
Serial Baud Rate	110 bps to 115.2 Kbps	
Data Bits	5, 6, 7, 8	
Parity	odd, even, none, mark, space	
Stop Bits	1, 1.5, 2	
Serial signals	RS-232: TxD, RxD, GND	
LED Indicators		
Power Indicator	Green on: Power is on	
Status Indicator	Green: System status indication	
Fault Indicator	Amber on: WAN connection link down	
WAN	Green on: Cellular modem is present Green blinking: Cellular modem is transmitting data	
Serial TX/RX LED	Red : Receiving data Green : Transmitting data	
10/100Base-T(X) RJ45 Port Indicator	Green for port Link / Act. Amber for 100Mbps indicator	
Fault Contact		
Relay	Relay output to carry capacity of 1A at 24VDC	
Power		
Input Power	12-48VDC power input on terminal block	
Power Consumption	4.5 Watts	
Physical Characteristic		
Enclosure	IP-30	
Dimension (W x D x H)	41(W) x 70(D) x 95(H)mm (1.61x 2.76 x 3.74inch.)	
Weight (g)	388g	
Environmental		
Storage Temperature	-40 to 85°C (-40 to 185°F)	
Operating Temperature	-10 to 60°C (14 to 140°F)	
Operating Humidity	5% to 95% Non-condensing	
Regulatory Approvals		
EMI	FCC Part 15, CISPR (EN55022) class A	
EMS	EN61000-4-2 (ESD), EN61000-4-3 (RS), EN61000-4-4 (EFT), EN61000-4-5 (Surge), EN61000-4-6 (CS), EN61000-4-8, EN61000-4-11	
Warranty	3 years	

Installation

Din-Rail Install Step



Wall-mounted Install Step


ORing

 Copyright© 2012 ORing
All rights reserved.

ORing Industrial Networking Corp.
 TEL: +886-2-2218-1066 Website: www.oring-networking.com
 FAX: +886-2-2218-1014 E-mail: support@oring-networking.com

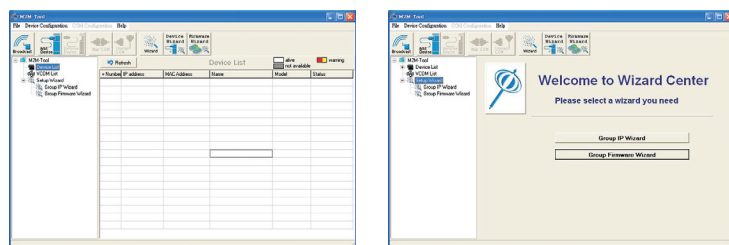
Application

IMG-111 Series, it support 3.5G /2G Modem dial up. The utility-M2M-Tool which is used to manage and monitor all of the serial ports on IMG-

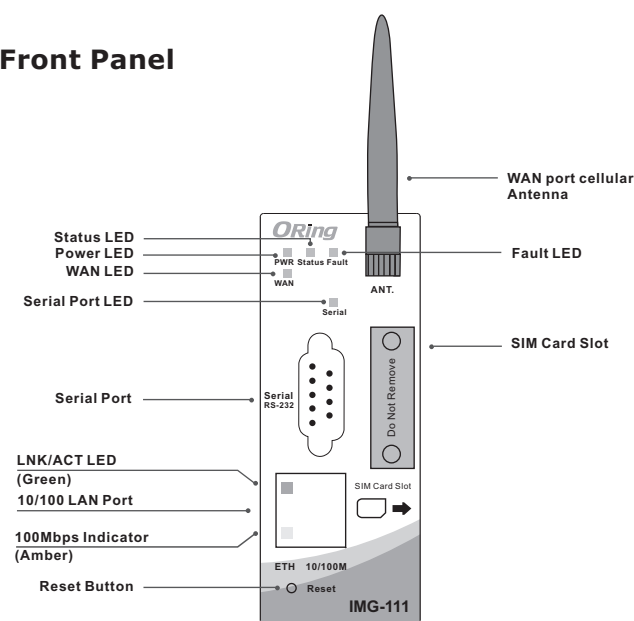
M2M Gateway Connection



Monitoring and Configuration



Front Panel



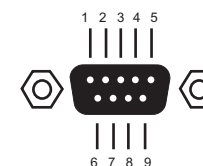
Accessory

- ① 4-Pin Terminal block
- ② Dust Cover (RJ-45)
- ③ Screw (M3 X3)
- ④ Wall-mounted kit
- ⑤ 40mm DIN-Rail kit
- ⑥ Power Cable with power jack
- ⑦ QIG
- ⑧ Cellular Antenna
- ⑨ Allen Key (For SIM card Slot)
- ⑩ CD

Packing list

Model name	Model Description	Accessory
IMG-111	Industrial Cellular 3.5G VPN Router with 1x10/100Base-T(X) 1xRS-232 M2M Gateway	⊙X 1, ⊙X 1, ⊙X 8, ⊙X 2, ⊙X 1, ⊙X 1, ⊙X 1, ⊙X 1, ⊙X 1, ⊙X 1
IMG-111-2G	Industrial Cellular 2G VPN Router with 1x10/100Base-T(X) 1xRS-232 M2M Gateway	⊙X 1, ⊙X 1, ⊙X 8, ⊙X 2, ⊙X 1, ⊙X 1, ⊙X 1, ⊙X 1, ⊙X 1, ⊙X 1

Serial Port Assignment

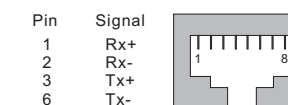
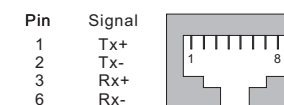


Serial Interface	Serial Port Pin# Description								
	1	2	3	4	5	6	7	8	9
RS - 232		RXD	TXD		GND				

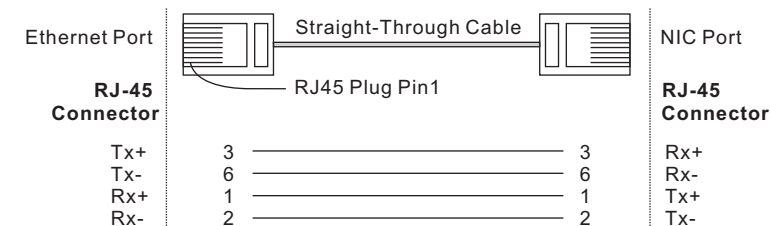
Communication Connections

10/100Base-T(X) Ethernet Port Connection

- RJ45 (8-pin, MDI) Port Pinouts
- RJ45 (8-pin, MDI-X) Port Pinouts



RJ45 (8-pin) to RJ45 (8-Pin) Straight-Through Cable Wiring



RJ45 (8-pin) to RJ45 (8-Pin) Cross-Over Cable Wiring

