

HSL-AI16-M-T 16-CH Temperature Input Module



Specifications

- ◆ Slave ID consumption: 2
- ◆ LED indicator: Power and Link
- ◆ Power supply required: 10V to +30V_{DC}
- ◆ 16-CH single-ended or 8-CH differential analog inputs(Jumper Select)
- ◆ Resolution: 16-bit
- ◆ Unit Conversion: Thermocouple, mV, V or mA
- ◆ Input range programmable 6 levels(Bipolar):
±2.5V, ±1V, ±500mV, ±100mV, ±50mV, ±15mV, ±20mA
- ◆ Input range programmable 6 levels (Unipolar):
±2.5V, ±1V, ±500mV, ±100mV, ±50mV, ±15mV, ±20mA
- ◆ Input range (Thermocouple Type, both Unipolar and Bipolar) :
J, K, T, E, R, S, B, N, C
J: 0°C~760°C
T: -100°C~400°C
R: 500°C~1750°C
B: 500°C~1800°C
C: 0°C~2320°C
K: 0°C~1370°C
E: 0°C~1000°C
S: 500°C~1750°C
N: -270°C~1300°C
- ◆ Sampling Rate(all channels) : 100Hz

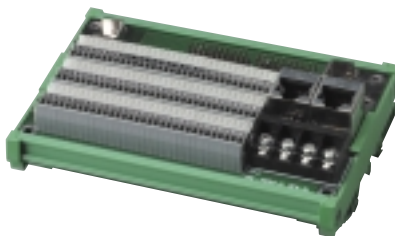
HSL-AI16A02-M-VV/-AV 16-CH Analog Input /2 Analog Output Module



Specifications

- ◆ Slave ID consumption: 2
- ◆ 16-CH single-ended or 8-CH differential analog input
- ◆ 2-CH Single-ended analog output
- ◆ AD Resolution: 16-bit (14-bit guarantee)
- ◆ DA Resolution: 16-bit
- ◆ AD Voltage Input Range: ±10V, ±5V, ±2.5V, ±1.25V
- ◆ AD Current Input Range: ±20mA
- ◆ AD Conversion Time: 10 μs
- ◆ DA Settling Time: 10 μs
- ◆ Over-voltage protection: ±30V
- ◆ LED indicator: Power and Link
- ◆ Power supply: +22V to +26V_{DC}
- ◆ Operating temperature: 0 to 60°C
- ◆ Storage temperature: -20 to 80°C
- ◆ Power consumption: 1.8W

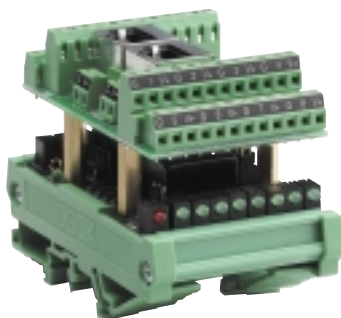
HSL-TB32-M-DIN 32-CH I/O Terminal Base



Specifications

- ◆ Field I/O wiring connection for HSL I/O modules
- ◆ Spring terminal for easy field wiring
- ◆ Power and ground included for each signal channel
- ◆ Interlocking design for rugged installation
- ◆ Power LED indicator
- ◆ DIN rail mounting
- ◆ Terminator resistor on board
- ◆ I/O Wire Gauge: 20 AWG. (max.); 28AWG. (min.)
- ◆ Power supply: 10V to +30V_{DC}

HSL-DI8D08-C-NN 8-CH Discrete Input 8-CH Discrete Output Module



Specifications

- ◆ Slave ID consumption: 1
- ◆ 8-CH digital input and 8-CH digital output
-NN: for NPN sinking type sensor input or dry contact and NPN sinking type output
- ◆ Photo couple isolation voltage: 2500V_{rms}
- ◆ Input impedance: 4.7KΩ
- ◆ Input current: ±10mA (Max) , ±12.5mA (Peak)
- ◆ Input voltage: ±40V (Max)
- ◆ Output switching capacity: Single channel 500mA; all channels 60mA at 24V_{DC}
- ◆ Output response time: ON → OFF: 180μs, OFF → ON: 1.2μs
- ◆ LED indicator: Power, Link and I/O status
- ◆ On board field I/O wiring connection for HSL I/O modules
- ◆ Spring terminal for easy field wiring
- ◆ Power and ground included (each pair of power/ground was shared by two I/O points)
- ◆ DIN rail mounting
- ◆ Terminator on board
- ◆ I/O Wire Gauge:
16 AWG. (max.); 24AWG. (min.)
- ◆ Power supply: 10V to +30V_{DC}
- ◆ Operating temperature: 0 to 60°C
- ◆ Storage temperature: -20 to 80°C
- ◆ Power consumption: 1.4W