



Industrial Management Ethernet Switches

Introduction

This Ethernet switch is designed for the applications of facility management, sewage treatment, power utility, telecommunication, transportation and all other mission-critical applications that require reliable Ethernet connectivity. This Manageable Ethernet switch is with manageable Redundant Ring. It contains the interface of 10/100TX, 1000TX, or 1000BaseX ports in SFP connector. The switch can protect your mission-critical applications from network interruptions or temporary malfunctions with its maximum 10mS ultra fast recovery time. This also support functions of network management, such as SNMP, RMON and Port/Tag-based VLAN security. Therefore, The switches are the best choice for highly-managed and Fiber Ethernet application.

Network Management and Remotely Configured

The management switch can be configured smartly by web browser, Telnet, CLI, and windows utility. Network administrators can determine to send event notifications through email, or SNMP trap, as well as segment ports into different VLANs, or filter multicast traffic by IGMP Snooping. To enhance the security, port access can be limited to pre-defined IP address table. Network determinism is answered by QoS for traffic prioritization.

Features

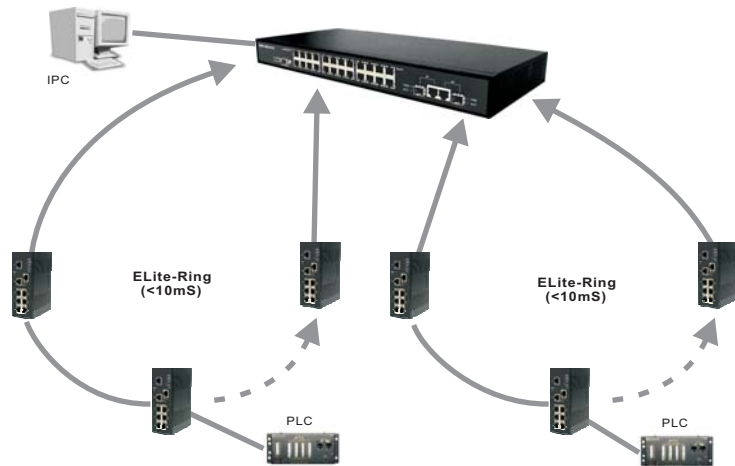
- Managed Layer 2 Switch with 24 or 16 10/100Mbps Ports and 2 Combo Gigabit Copper/SFP Ports
- Delivers up to 200Mbps Throughput per Port for 10/100TX in Full-Duplex Mode
- Support ACLs, 802.1x User Authentication for Security
- Management through SNMP, Telnet, Web-based GUI
- 8K MAC Address Table available

ELite-Ring Technology

World's Fastest Recovery Time: < 10mS (ELite-Ring)

The management Ethernet switch support the fastest 10mS redundant recovery time which make a non-stop Ethernet connection. If your primary communication path is disconnected, the Redundant Ring Technology provides a redundant path in the network. Its 10mS ultra fast recovery time allows the Ethernet Switches to supply a solid foundation of highly fault-tolerant and easily-managed network.

Redundant Ring (<10mS): ELite-Ring

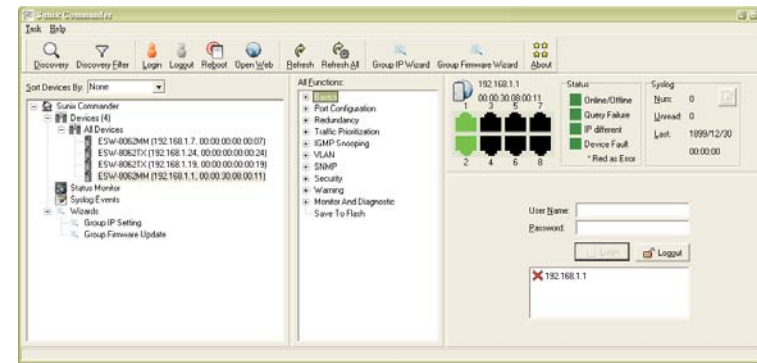


Windows Management Utility ~ Sunix Commander

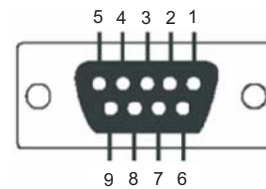
SUNIX Commander is not only a powerful utility for configuring but also a useful utility for monitoring. Users can monitor switches' status via SUNIX Commander. When the monitored switches fail, the failure information will be displayed on SUNIX Commander interface.

Different from any other management software that can only configure a switch at once, SUNIX Commander with its advanced technology can manage all the switches from the same network at the same time. There is no need to set up the switches one by one. You can simply set up all the switch IPs at once, backup all the configuration files at once, and upgrade all firmware which is in the same switch version. Through SUNIX Commander, the load of networking technician can be reduced efficiently.

Network Management Windows Utility



Console Port Pin-Assignment

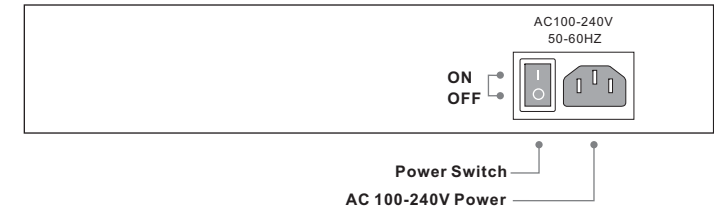


Setting: 9600 bps, 8, N, 1
User name: admin
Password: admin

RS-232 Console Port Pin# Description								
1	2	3	4	5	6	7	8	9
-	TXD	RXD	-	GND	-	-	-	-

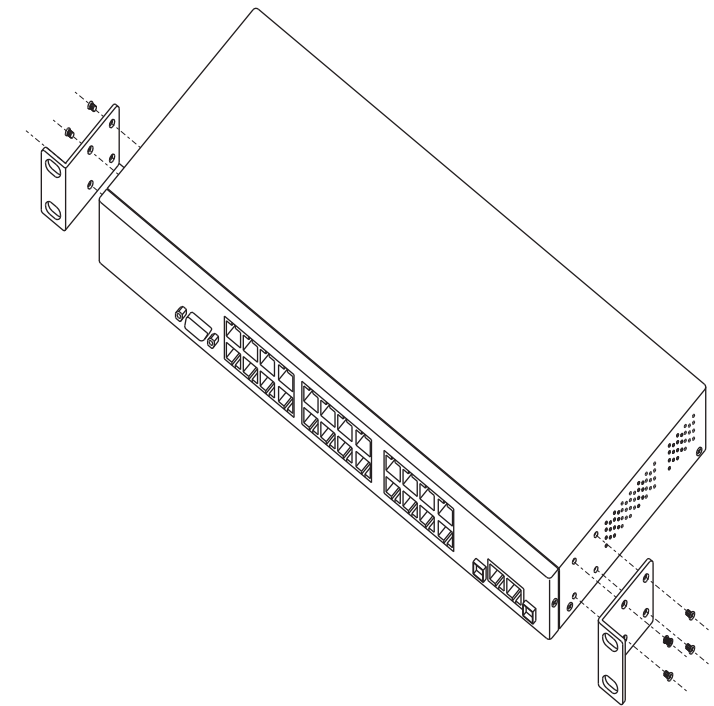
Product Interface

Back View



Installation

Rack-mounted Install Step

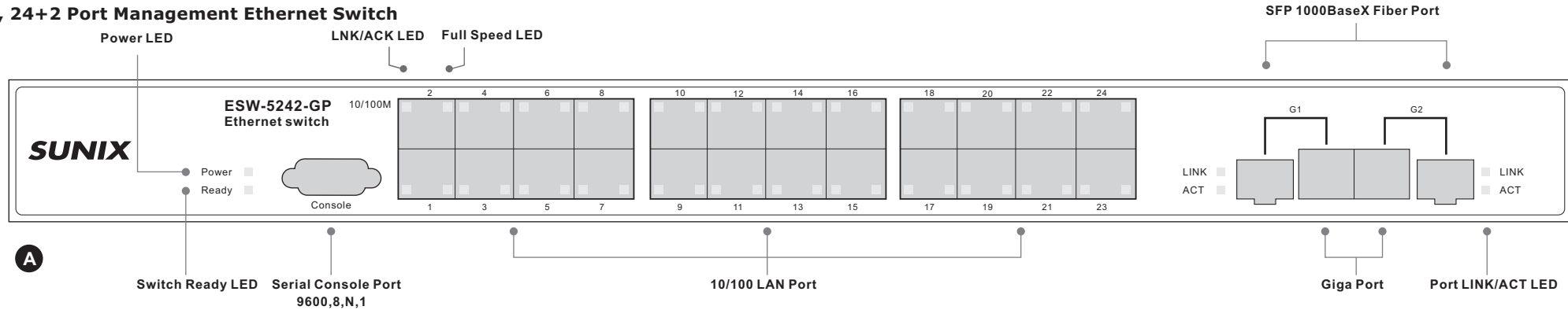




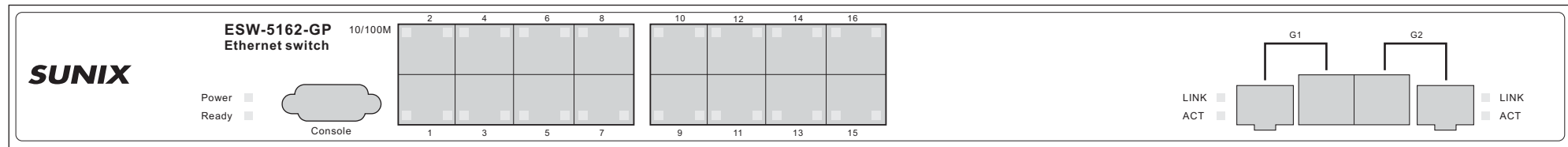
Industrial Management Ethernet Switches

● Front Panel

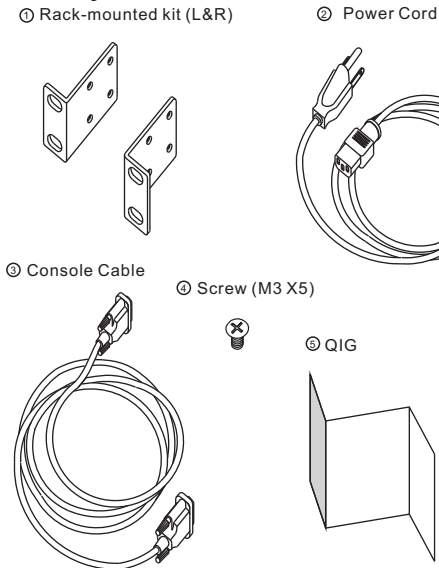
● ESW-5242-GP, 24+2 Port Management Ethernet Switch



● ESW-5162-GP, 16+2 Port Management Ethernet Switch



● Accessory



● Packing List

● 24+2 / 16+2 Port Management Ethernet Switch

Model Name	Front Panel:	Model Description	Accessory
ESW-5242-GP	A	26-port Management Ethernet Switch with 24x10/100TX & 2xGiga Combo port	① X 1, ② X 1, ③ X 1, ④ X 8, ⑤ X 1, ⑥ X 1
ESW-5162-GP	B	18-port Management Ethernet Switch with 16x10/100TX & 2xGiga Combo port	① X 1, ② X 1, ③ X 1, ④ X 8, ⑤ X 1, ⑥ X 1



Copyright© by SUNIX Co, LTD.
All rights reserved.



TEL: +886-2-8913-1987
FAX: +886-2-8913-1986

Website: www.sunix.com.tw
E-mail: info@sunix.com.tw