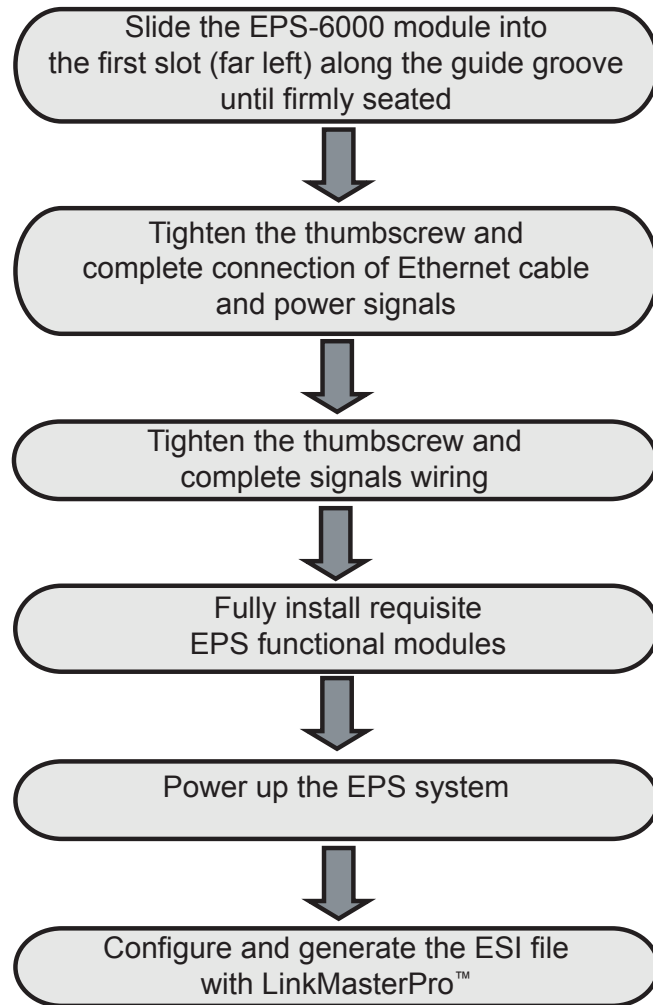


EPS-6000

Remote 8CH $\pm 10V$ Analog Output Module for EtherCAT

Getting Started



Specifications

EPS Module (Slot) Support	4 (max)
Ethernet Connectivity	N/A
Field Bus Connectivity	EtherCAT
Data Transmission Rate	100 Mbaud
Bus Interface	2 x RJ45
EtherCAT Connectivity	CAT5 / CAT5e cable (recommended)
Inner Bus Synchronization	> 0.1 μ s
Supply Voltage	24Vdc ($\pm 10\%$)
Thermal Dissipation (at max temp.)	< 6.6W (max.) @ EVCC=24V+10%
Operating Temperature	-20 to 60°C
Isolation (Channel-to-DGND)	2kV (DC)
Isolation (Channel-to-Chassis)	2kV (DC)

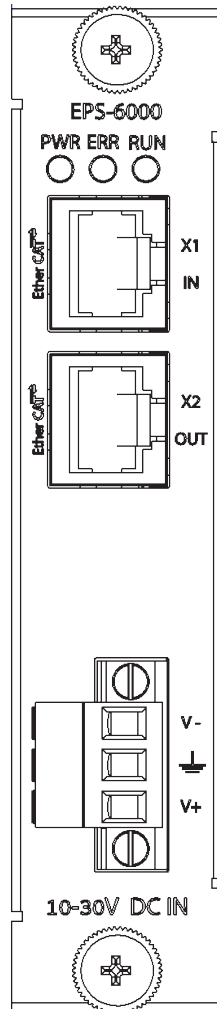
Features

- EtherCAT COE, FOE, and AOE support
- Operable in -20°C to 60°C environments
- Communication quality diagnostics
- EPS system diagnostic indicators
- Compact 100 (L) x 100 (H) mm size
- Safety mode automatically initiates when EPS module is withdrawn
- Configurable distributed clock for increased synchronization of EPS modules

Connectors

X1 & X2

Pin	Description
08	Termination
07	Termination
06	TX-
05	Termination
04	Termination
03	TX+
02	RX-
01	RX+

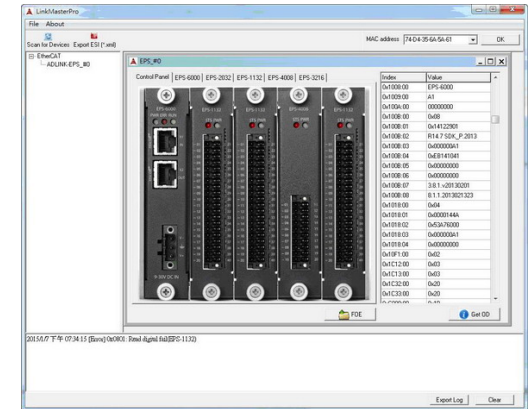


Power

Pin	Description
01	External Ground
02	Shielding Ground
03	External Power Input

Configuration & ESI Generation

LinkMasterPro™ is a Windows-based utility from ADLINK, helping configuration of the entire EPS system and generating corresponding EtherCAT slave information (referred to ESI) in XML format. LinkMasterPro™ automatically detects installed EPS modules and evaluates functionality of the EPS system.



LED Indicators

LED	Status	Function	Description
PWR	Lit	System Power Status	Power ON
	Off		Power OFF / Power level below 20V
ERR	Lit	System Error Handling	Error
	Blinking		Warning (*1)
	Off		No warning and error
RUN	Lit	EtherCAT Communication Status	Normal operation
	Off		No power/Under configuration/ Watchdog counter expired (1 sec)

* Please refer to Error Code in the EPS User's Manual for details

Contact ADLINK

Web: <http://www.adlinktech.com>
 Service: service@adlinktech.com

Tel: +886-2-8226-5877
 Fax: +886-2-8226-3337

Copyright 2015 ADLINK Technology, Inc.
 Contents and specifications subject to change without notice.



Advance Technologies
Automate the World