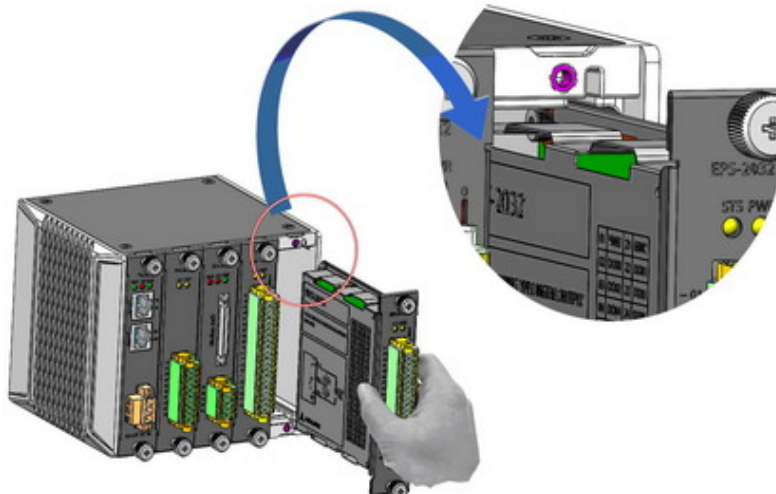
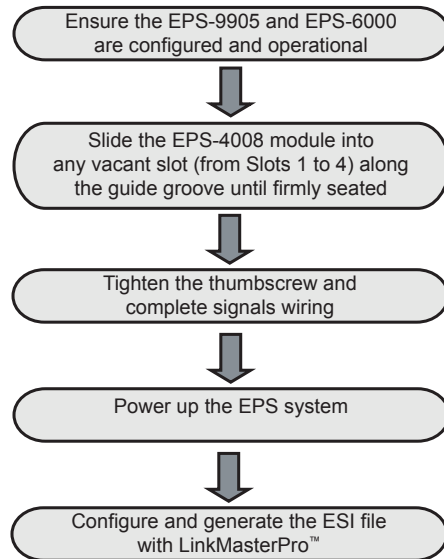


## EPS-4008

### Remote 8-CH $\pm 10V$ Analog Output Module for EtherCAT

#### Getting Started



#### Specifications

Channels	8 Single-ended
Output Range	$\pm 10V$
Resolution	16 bit
Sampling Rate	100KHz
Offset Error	$\pm 0.2mV$
Gain Error	$\pm 0.05\%$ of FSR
Offset Drift	$\pm 0.0075mV / ^\circ C$
Gain Drift	$\pm 0.00025\% / ^\circ C$ of FSR
Output Current Capacity	5 mA
Power On State	Relay off
Voltage Protection	$\pm 24V$ / Relay off When error voltage occurs
Power Consumption from Chassis	< 450mW (max.)
Thermal Dissipation (at max temp.)	< 2.55W (max.) @ EVCC=24V+10%
Operating Temperature	-20 - 60°C
Isolation (Channel-to-DGND)	2kV (DC)
Isolation (Channel-to-Chassis)	2kV (DC)

#### Features

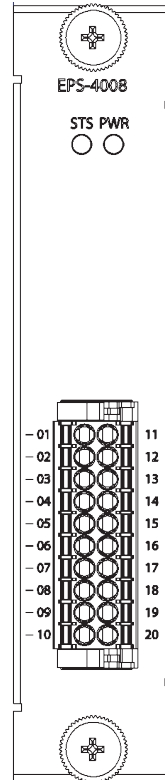
- 8CH 100kS/s  $\pm 10V$  single-ended analog output
- Operable in -20°C to 60°C environments
- IEC 61131 compliant
- Hot swappable under sustained power
- Compact 100 (L) x 100 (H) mm size
- Module temperature self-diagnostics
- Loopback circuitry for output monitoring

### Connector

Connector: Phoenix Contact, DFMC series, 1787195, pitch=3.5mm, 1x20pin, AWG 16-24 gauge

### Pin Definitions

Pin	Description	Pin	Description
01	NC	11	NC
02	AO01	12	AGND
03	AO02	13	AGND
04	AO03	14	AGND
05	AO04	15	AGND
06	AO05	16	AGND
07	AO06	17	AGND
08	AO07	18	AGND
09	AO08	19	AGND
10	NC	20	NC

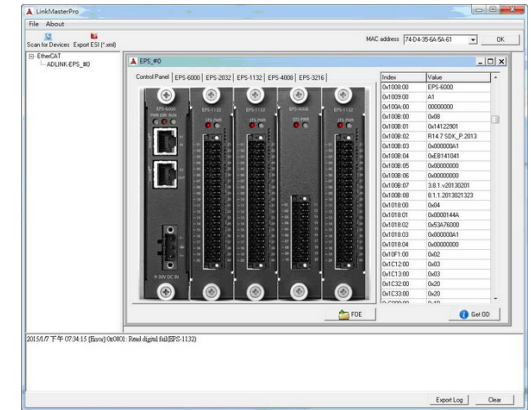


### LED Indicators

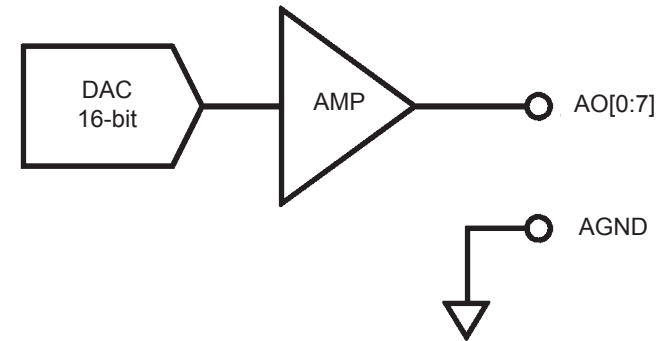
Name	Status	Function
STS	Blinking	Temperature Protection Module Present
PWR	Lit	Module Power Status

### Configuration & ESI Generation

LinkMasterPro™ is a Windows-based utility from ADLINK, helping configuration of the entire EPS system and generating corresponding EtherCAT slave information (referred to ESI) in XML format. LinkMasterPro™ automatically detects installed EPS modules and evaluates functionality of the EPS system.



### Signal Connection



**Contact ADLINK**

Web: <http://www.adlinktech.com>  
 Service: [service@adlinktech.com](mailto:service@adlinktech.com)

Tel: +886-2-8226-5877  
 Fax: +886-2-8226-3337

Copyright 2015 ADLINK Technology, Inc.  
 Contents and specifications subject to change without notice.



**Advance Technologies**  
Automate the World