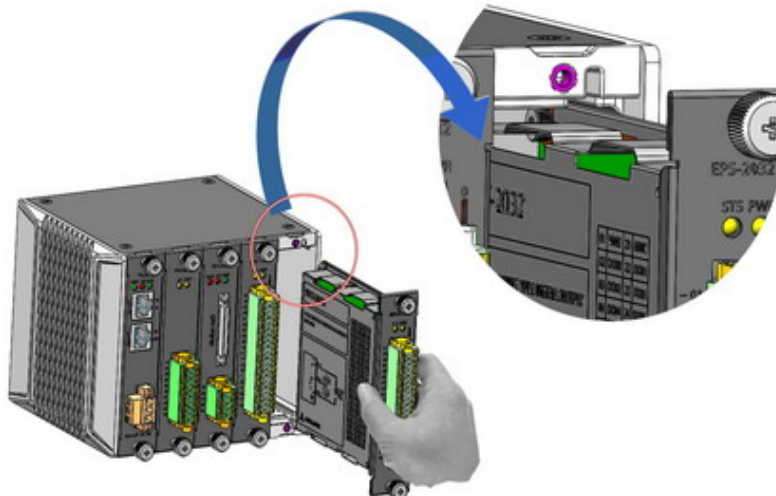
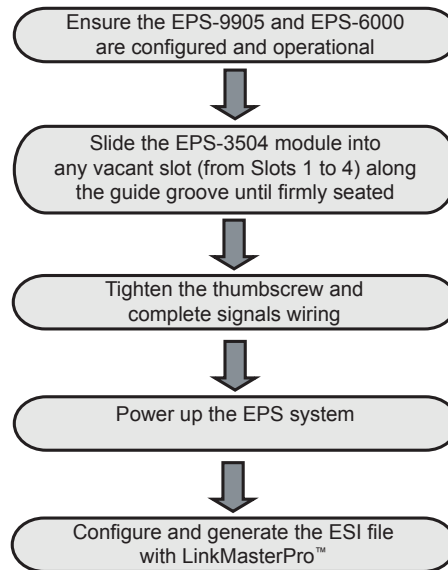


## EPS-3504

### Remote 4CH RTD Thermal Input Module for EtherCAT

#### Getting Started



#### Specifications

Channels	4 RTD
Sensors	PT100, PT500, PT1000
Technology	2-/3-/4-wire
Resolution	24-bit
Sampling Rate	5-20Hz
Temperature Range	-200 to 850°C
Path Resistance	18 – 3900Ω
Accuracy (DC)	± 0.007% of FSR
Accuracy (Temperature)	± 0.5°C
Excitation Current (Max.)	500μA
Power Consumption from Chassis	< 450mW (max.)
Thermal Dissipation (at max temp.)	< 2.55W (max.) @ EVCC=24V+10%
Operating Temperature	-20 to 60°C
Isolation (Channel-to-DGND)	2kV (DC)
Isolation (Channel-to-Chassis)	2kV (DC)

#### Features

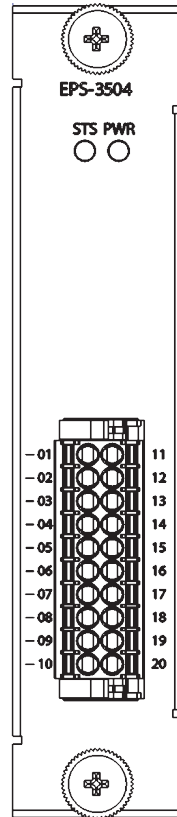
- Supports 4CH RTD input
- IEC 61131 compliant
- Compact 100 (L) x 100 (H) mm size
- Operable in -20°C to 60°C environments
- Hot swappable under sustained power
- Module temperature self-diagnostics

### Connector

Connector: Phoenix Contact, DFMC series, 1787195, pitch=3.5mm, 1x20pin, AWG 16-24 gauge

#### Pin Definitions

Pin	Description	Pin	Description
01	AGND	11	AGND
02	EX0+	12	EX0-
03	SI0+	13	SI0-
04	EX1+	14	EX1+
05	SI1+	15	SI1+
06	EX2+	16	EX2+
07	SI2+	17	SI2+
08	EX3+	18	EX3+
09	SI3+	19	SI3+
10	AGND	20	AGND

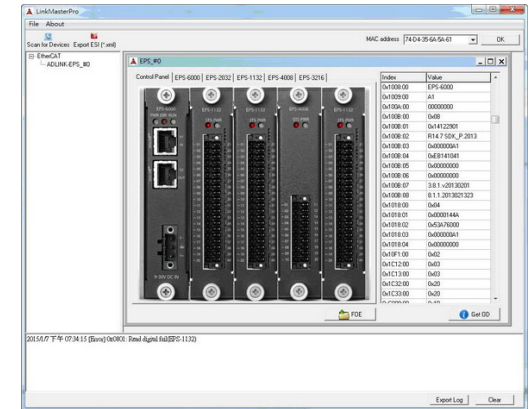


#### LED Indicators

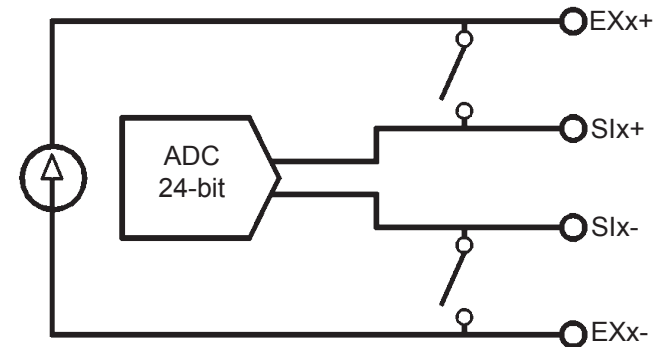
Name	Status	Function
STS	Blinking	Temperature Protection Module Present
PWR	Lit	Module Power Status

### Configuration & ESI Generation

LinkMasterPro™ is a Windows-based utility from ADLINK, helping configuration of the entire EPS system and generating corresponding EtherCAT slave information (referred to ESI) in XML format. LinkMasterPro™ automatically detects installed EPS modules and evaluates functionality of the EPS system.



#### Signal Connection



**Contact ADLINK**

Web: <http://www.adlinktech.com>  
 Service: [service@adlinktech.com](mailto:service@adlinktech.com)

Tel: +886-2-8226-5877  
 Fax: +886-2-8226-3337

Copyright 2015 ADLINK Technology, Inc.  
 Contents and specifications subject to change without notice.



*Advance Technologies  
Automate the World*