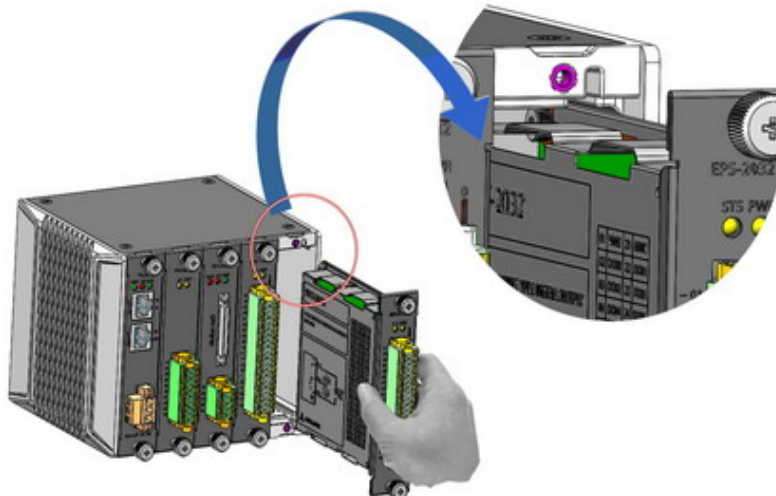
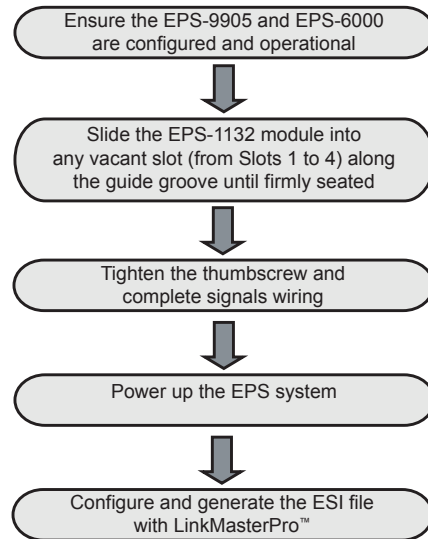


EPS-1132

Remote 32CH Digital Input Module for EtherCAT

Getting Started



Specifications

Channels	32
Input	Sinking
EVCC Input	24V \pm 10%
OFF State Input Voltage	<5V (IEC61131-2 Type1/3)
OFF State Input Current	<2.3mA
ON State Input Voltage	10V to 30V (IEC61131-2 Type1/3)
ON State Input Current	2.3mA (typ.)
IO Protection Input Voltage	Up30V
IO Protection Reverse Voltage	Up-30V
IO Protection Current limit	< 2.3mA (typ.)
Response Time	150 μ s to 3ms
Power Consumption from Chassis	< 600mW (max.)
Thermal Dissipation (at max temp.)	< 2.55W (max.) @ EVCC=24V+10%
Isolation (Channel-to-DGND)	2kV (DC)
Isolation (Channel-to-Chassis)	2kV (DC)

Features

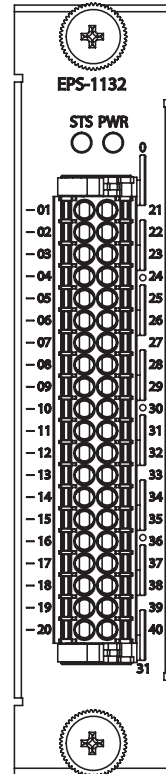
- Supports 32 digital input channels
- Operable in -20°C to 60°C environments
- IEC 61131-2 compliant
- Hot swappable under sustained power
- Sinking type design with sinking current 2.3 mA (max.)
- Module temperature self-diagnostics
- Individual LED channel indicators

Connector

Connector: Phoenix Contact, DFMC series, 1787195, pitch=3.5mm, 2x20pin, AWG 16-24 gauge

Pin Definitions

Pin	Description	Pin	Description
01	DI00	21	DI01
02	DI02	22	DI03
03	DI04	23	DI05
04	DI06	24	DI07
05	EGND	25	EGND
06	DI08	26	DI09
07	DI10	27	DI11
08	DI12	28	DI13
09	DI14	29	DI15
10	EGND	30	EGND
11	DI16	31	DI17
12	DI18	32	DI19
13	DI20	33	DI21
14	DI22	34	DI23
15	EGND	35	EGND
16	DI24	36	DI25
17	DI26	37	DI27
18	DI28	38	DI29
19	DI30	39	DI31
20	NC	40	NC

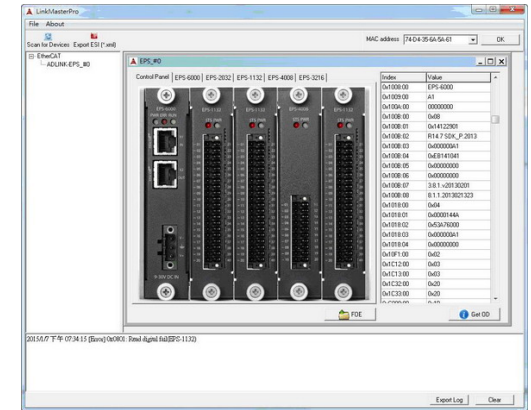


LED Indicators

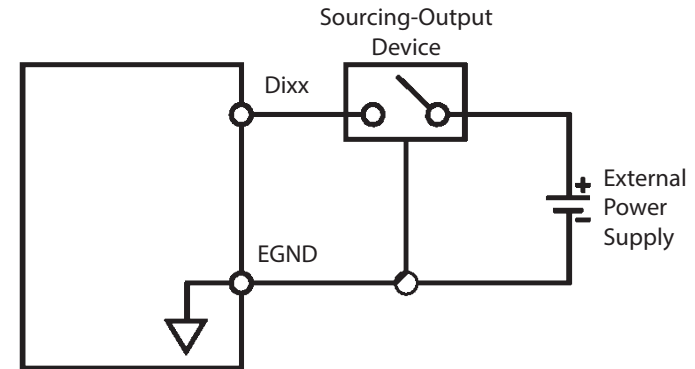
LED	Status	Function
STS	Blinking	Temperature Protection Module Present
PWR	Lit	Module Power Status
Channel (0-3, 4-7, 8-11, 12-15, 16-19, 20-23, 24-27, 28-31)	Lit	Channel Active

Configuration & ESI Generation

LinkMasterPro™ is a Windows-based utility from ADLINK, helping configuration of the entire EPS system and generating corresponding EtherCAT slave information (referred to ESI) in XML format. LinkMasterPro™ automatically detects installed EPS modules and evaluates functionality of the EPS system.



Signal Connection



Contact ADLINK

Web: <http://www.adlinktech.com>
 Service: service@adlinktech.com

Tel: +886-2-8226-5877
 Fax: +886-2-8226-3337

Copyright 2015 ADLINK Technology, Inc.
 Contents and specifications subject to change without notice.



Advance Technologies
Automate the World