

EMC-8485
Ethernet to RS422/485
converter module
User's Manual (V1.0)

健昇科技股份有限公司

JS AUTOMATION CORP.

新北市汐止區中興路 100 號 6 樓
6F., No.100, Zhongxing Rd.,
Xizhi Dist., New Taipei City, Taiwan
TEL : +886-2-2647-6936
FAX : +886-2-2647-6940

<http://www.automation.com.tw>

<http://www.automation-js.com/>

E-mail : control.cards@automation.com.tw

Correction record

Version	Record
1.0	firmware version 1.0 up

Contents

1.	Forward.....	4
2.	Features.....	5
3.	Specifications.....	6
3.1	RS422/485	6
3.2	Digital input.....	6
3.3	Digital output.....	6
3.4	Ethernet.....	6
3.5	General.....	6
4.	Layout and dimensions	7
4.1	EMC-8485	7
5.	Pin definitions.....	8
5.1	JM2 pin definitions	8
5.2	JM3 pin definitions(EMC-8485)	8
6.	I/O Interface diagram.....	9
6.1	I/O diagram.....	9
7.	Applications.....	10
8.	Ordering information	11

Notes on hardware installation

Please register as user's club member to download the
“Step_by_step_installation_of_Ethernet_module” document from <http://automation.com.tw>

1. **Forward**

Thank you for your selection of Ethernet module EMC8485 ethernet to isolated RS422/485 converter module.

Thanks to the booming of network, Ethernet become a reliable and low cost solution for data communication. To utilize the Ethernet as data communication highway of industrial control devices is more attractive than ever. EMC8485 module is a converter module, which can convert the traditional RS422/485 communication protocol to Ethernet or vice versa. With the extra 8-bit I/O and counter function, you can extend the convert to some control functions. A stable, high reliability and remote addressable module give you a new approach of application.

In the same series:

EMC-8432 Ethernet to RS232 converter with 8-bit I/O

Any comment is welcome,
please visit our website

<http://www.automation.com.tw/>

<http://www.automation-js.com/> for the up to date information.

2. Features

- Over-voltage protection on digital input
- Various IO combinations : 8 bit configurable I/O's, any bit can be input or output
- High drive capacity on digital output
- Digital I/P as counter input
- Baudrate up to 921.6K
- Wide power range
- RS422, RS485 software selectable
- IP re-assignment
- 10/100M auto detection
- Software key function

3. Specifications

3.1 RS422/485

3.1.1 Isolation : magnetic coupler

3.1.2 Baud rate: 1200, 2400, 4800, 9600, 19200, 38400, 57600, 115200, 921600

3.1.3 Data bits: 5, 6, 7, 8

3.1.4 Stop bits: 1, 1.5,

3.1.5 Parity: None, Even, Odd

3.2 Digital input

3.2.1 Input points: max 8 (Configurable)

3.2.2 Logic high level: 3.15V(min)

3.2.3 Logic low level: 1.35V(max)

3.2.4 Over-voltage protection: 60Vdc(max)

3.2.5 Over-current protection: 50mA(max)

3.3 Digital output

3.3.1 Transistor output: max 8 (Configurable)

3.3.2 Transistor capacity: 500mA(peak), 45Vdc(max)

3.4 Ethernet

3.4.1 10/100M auto switch x 2 port

3.5 General

3.5.1 Power requirement: 12Vdc ~24Vdc

3.5.2 Operation Temperature: 0 ~ +70 degree C

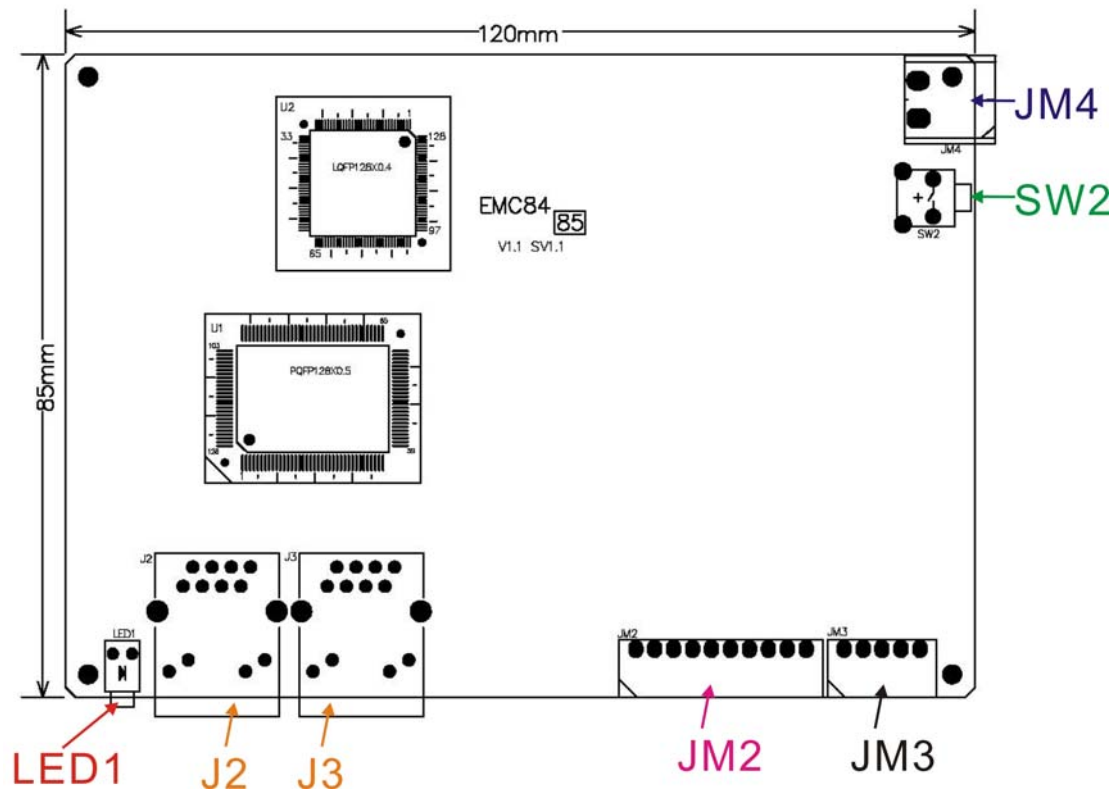
3.5.3 Storage Temperature: -20 ~ +80 degree C

3.5.4 Operation Humidity: 5~95% RH, non-condensing

3.5.5 Dimension: 107.6(D)*135.8(W)*34(H) mm
4.3(D)*5.4(W)*1.4(H) in

4. Layout and dimensions

4.1 EMC-8485



LED1: system active LED

J2,J3: Ethernet RJ45 socket

JM2: I/O connector

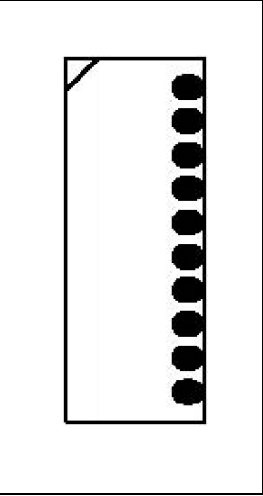
JM3: RS422/485 connector

JM4: external power 24V connector

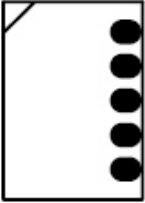
SW2: system reset switch

5. Pin definitions

5.1 JM2 pin definitions

+Ve*	1	
IO_0	2	
IO_1	3	
IO_2	4	
IO_3	5	
IO_4	6	
IO_5	7	
IO_6	8	
IO_7	9	
GND	10	

5.2 JM3 pin definitions(EMC-8485)

RS422			RS485	
TXD+	1		1	
TXD-	2		2	
RXD+	3		3	D+
RXD-	4		4	D-
EXTG	5	5	EXTG	

Note:

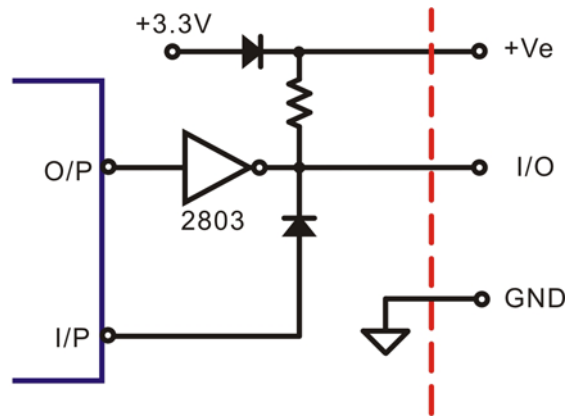
Always connect the EXTG between the communication devices for RS422 or RS485, do not let the signal floating to improve noise immunity.

* +Ve can floating or voltage input (voltage range +3.3V ~ +24V)

* +Ve can apply different voltage as you need.

6. I/O Interface diagram

6.1 I/O diagram



Note: If +Ve is externally applied +24V then the IO_0 ~ IO_7 will be also applied.

7. Applications

- RS422/485 to ethernet converter
- Ethernet to RS422/485 converter
- Remote signal input
- Remote signal counter
- Remote signal output

8. **Ordering information**

PRODUCT	DESCRIPTIONS
EMC-8485	Ethernet module to RS422/485 (8 IO) Module
JD52000	110/220Vac to 24Vdc @1.5A power supply
JD52026	110/220Vac to 24Vdc @0.75A power adapter