

HSL HSL-DO32-DB 32-CH Discrete Output Daughter Board for HSL System

Pin Definitions

JP3			JP4		
Pin #	Signal Name	Description	Pin #	Signal Name	Description
1	+VS	External power, +10V~+30V _{DC}	1	DO12	Discrete Output Channel 12
2	GND	External ground	2	DO13	Discrete Output Channel 13
3	NC	No connection	3	DO14	Discrete Output Channel 14
4	GND	External ground	4	DO15	Discrete Output Channel 15
5	RX+	RS-422 receiving line, positive	5	DO16	Discrete Output Channel 16
6	TX+	RS-422 transmission line, positive	6	DO17	Discrete Output Channel 17
7	RX-	RS-422 receiving line, negative	7	DO18	Discrete Output Channel 18
8	TX-	RS-422 transmission line, negative	8	DO19	Discrete Output Channel 19
9	DO0	Discrete Output Channel 0	9	DO20	Discrete Output Channel 20
10	DO1	Discrete Output Channel 1	10	DO21	Discrete Output Channel 21
11	DO2	Discrete Output Channel 2	11	DO22	Discrete Output Channel 22
12	DO3	Discrete Output Channel 3	12	DO23	Discrete Output Channel 23
13	DO4	Discrete Output Channel 4	13	DO24	Discrete Output Channel 24
14	DO5	Discrete Output Channel 5	14	DO25	Discrete Output Channel 25
15	DO6	Discrete Output Channel 6	15	DO26	Discrete Output Channel 26
16	DO7	Discrete Output Channel 7	16	DO27	Discrete Output Channel 27
17	DO8	Discrete Output Channel 8	17	DO28	Discrete Output Channel 28
18	DO9	Discrete Output Channel 9	18	DO29	Discrete Output Channel 29
19	DO10	Discrete Output Channel 10	19	DO30	Discrete Output Channel 30
20	DO11	Discrete Output Channel 11	20	DO31	Discrete Output Channel 31

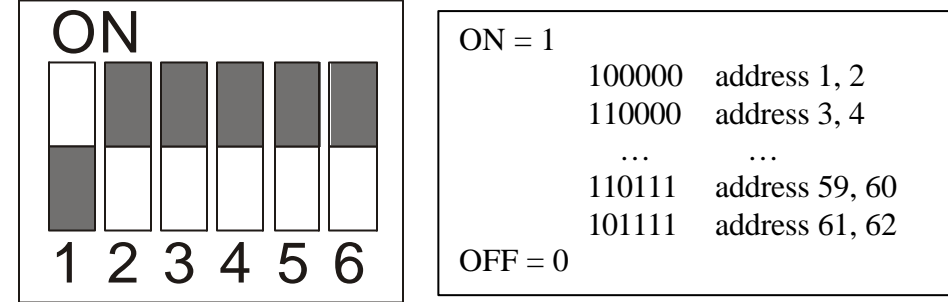
Specifications

Transistor Output						
Model	Number	Type	Switching Capacity max.		Response Time	
			with TB32-U; TB64	with TB32-DO	ON	OFF
-N	32	NPN Sinking	-60mA at 24V _{DC}	-300mA at 24V _{DC}	2 ms max.	2 ms max.
-P	32	PNP Sourcing	+60mA at 24V _{DC}	NA	2 ms max.	2 ms max.
Miscellaneous						
Model	Terminal Base Option		External Power Requirement	Power Consumption	Weight	
-N	HSL-TB32-DO-DIN; HSL-TB32-U-DIN; HSL-TB64-DIN		+10V to +30V _{DC}	1.8 W	72g	
-P	HSL-TB32-U-DIN; HSL-TB64-DIN		+10V to +30V _{DC}	1.8 W	72g	

LED Indication: Active DC power (Red); Link (Green); Discrete Output (Yellow)

DIP Switch Setting

The DI32 occupies 2 consecutive address allocations starting from odd, that is, the switch bit 1 fixed to ON.



Discrete Output Field I/O Configuration

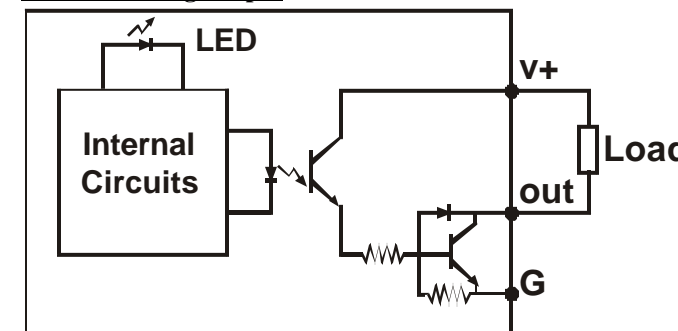
With HSL-TB32-U-DIN; HSL-TB32-DO-DIN (HSL-DO32-DB-N only)

Channel No.	Terminal No.	Channel No.	Terminal No.	Channel No.	Terminal No.	Channel No.	Terminal No.
0	0	8	8	16	16	24	24
1	1	9	9	17	17	25	25
2	2	10	10	18	18	26	26
3	3	11	11	19	19	27	27
4	4	12	12	20	20	28	28
5	5	13	13	21	21	29	29
6	6	14	14	22	22	30	30
7	7	15	15	23	23	31	31

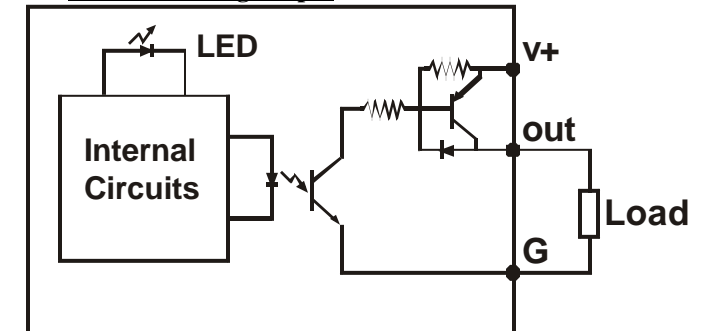
With HSL-TB64-DIN (Slot I / Slot II)

Channel No.	Terminal No.	Channel No.	Terminal No.	Channel No.	Terminal No.	Channel No.	Terminal No.
0	0 / 32	8	8 / 40	16	16 / 48	24	24 / 56
1	1 / 33	9	9 / 41	17	17 / 49	25	25 / 57
2	2 / 34	10	10 / 42	18	18 / 50	26	26 / 58
3	3 / 35	11	11 / 43	19	19 / 51	27	27 / 59
4	4 / 36	12	12 / 44	20	20 / 52	28	28 / 60
5	5 / 37	13	13 / 45	21	21 / 53	29	29 / 61
6	6 / 38	14	14 / 46	22	22 / 54	30	30 / 62
7	7 / 39	15	15 / 47	23	23 / 55	31	31 / 63

-N NPN Sinking Output



-P PNP Sourcing Output



Ordering Information

HSL-DO32-DB-N: 32-CH Discrete NPN Sinking Output Daughter Board
HSL-DO32-DB-P: 32-CH Discrete PNP Sourcing Output Daughter Board

Terminal Base

HSL-TB32-DO-DIN: 32-CH I/O Terminal Base for HSL-DO32-DB-N with DIN Socket
HSL-TB32-U-DIN: 32-CH I/O Terminal Base with DIN Socket
HSL-TB64-DIN: 64-CH I/O Terminal Base with DIN Socket

ADLINK on the Internet

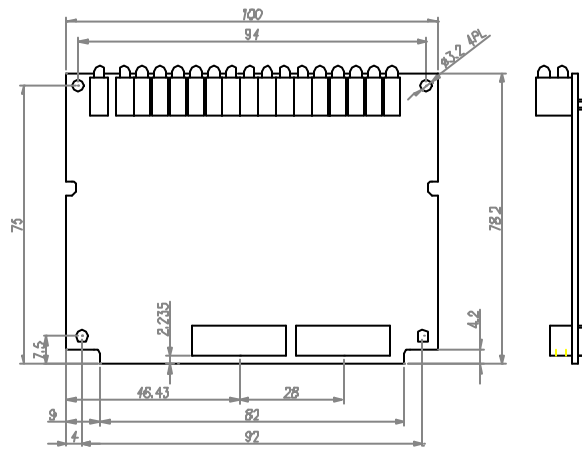
Homepage: <http://www.adlink.com.tw>
Service: service@adlink.com.tw
Technical Assistance: NuDAM@adlink.com.tw

Copyright © 2001 ADLINK TECHNOLOGY INC.
TEL: 886-2-82265877 FAX: 886-2-82265717
Contents and specification subject to change without notice.
HSL® is a registered trademark of ADLINK TECHNOLOGY INC. Other brands of products are trademarks or registered trademarks of their respective holders.
AM-HSLDBIO003-EI.00

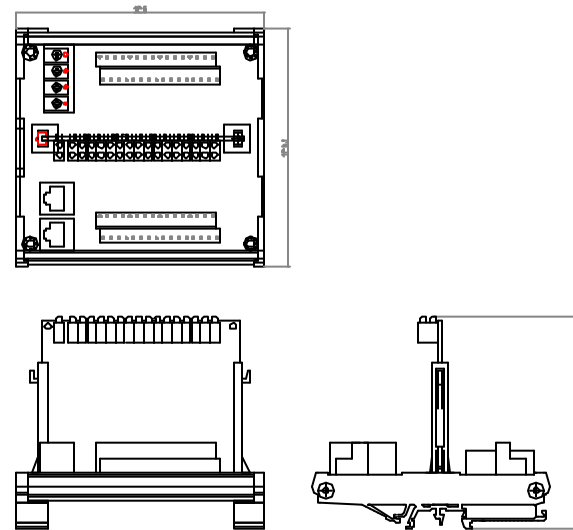


Dimension

-DB Daughter Board (100x78.2) mm



-DB with HSL-TB32-DO-DIN (126x120.1x107.3) mm



-DB with HSL-TB64-DIN (168.7x120.1x107.3) mm

