

IUSB-9041-WG

>> 4-port USB2.0 to 802.11 b/g and 1-port 10/100TX IP USB Server

- High Speed Air Connectivity :WLAN interface support up to 54Mbps link speed
- Highly Security Capability : WEP/WPA/WPA2/TKIP supported
- Network-enabled USB hub
- Access and monitor USB peripheral devices over TCP/IP network
- Works with existing POS or other application software
- USB 1.0 / 1.1 / 2.0 Support
- Powerful Windows utility USB-Tool
- Virtual USB driver support
- Multiple units supported per server



> Features

- High Speed with a maximum link speed of 54Mbps With IEEE802.11 b/g dual mode capability
- High Ssecurity Capability with WEP, WPA, WPA2and TKIP
- Data rates up to 480 Mbps per USB port
- RJ-45 Ethernet to 4 USB ports
- 500 mA downstream power per USB port
- USB 1.0 / 1.1 / 2.0 Support
- USB Hub support to extend device
- Static/DHCP IP address per unit
- Multiple units supported per server
- Powerful configuration Windows utility USB-Tool
- 10/100Base-TX Ethernet support
- Rigid IP-30 housing design
- Din-Rail and panel mounting enabled

> Introduction

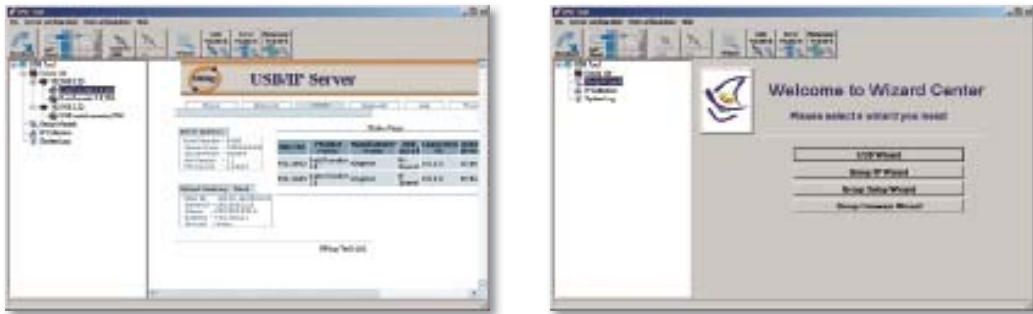
IUSB-9041-WG is a network-enabled USB hub. It is a powerful remote networking solution to utilize, making it easy to connect USB devices anywhere through the network, while eliminating the need for locally-attached host PCs. IUSB-9041-WG provides four USB 2.0 ports, which deliver the same Plug and Play experience as onboard USB ports. Software drivers are loaded onto a host PC or server, enabling remote devices to communicate with the host PC, without changing existing application software. Peripheral devices can be centrally managed and monitored from a remote server or PC via an IP address. IUSB-9041-WG is also compatible with Bulk or Interrupt type USB devices such as bar-code scanners, printers, fingerprint scanners, mice, pole displays, card readers, USB flash drives, web camera, and more. In addition, bundled powerful Windows utility – USB-Tool can be used to discovery, mapping USB servers in the LAN and WLAN. USB-Tool also provides security functions, like Access IP list control and friendly wizards for group IP setting and firmware upgrade. User can also use web interface to manage IUSB-9041-WG remotely from internet.

> USB-Tool

In practical operation of IUSB-9401, users can access USB devices through the TCP/IP network remotely without the connecting USB device locally. For logistic application, zero clients can avoid the central control PC been damaged and reduce total investment. Windows utility (USB-Tool) is supported for configuration and management remotely. This utility is very helpful for you to manage and monitor all of the USB servers on the network.

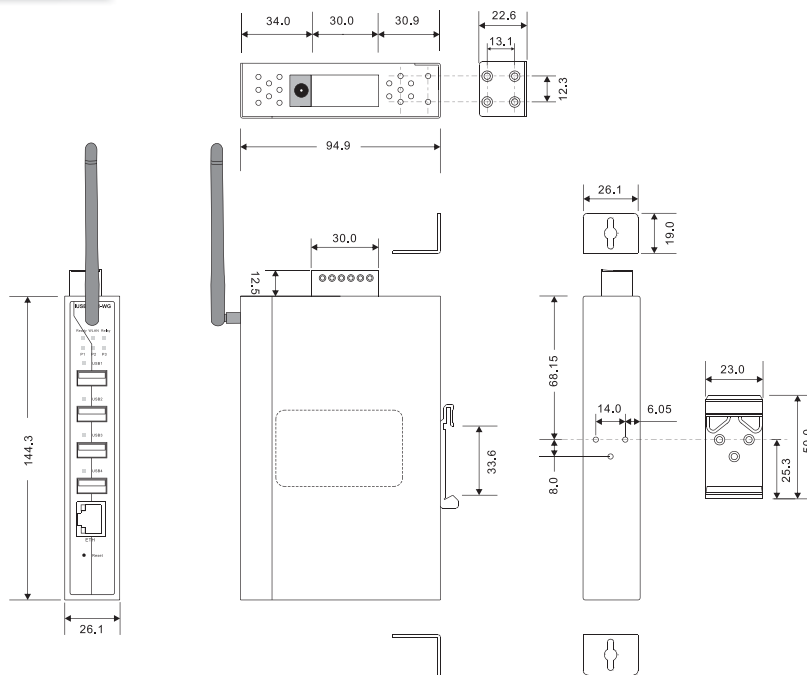


USB remote connectivity



USB-Tool : Monitoring and Configuration interface

> Dimension



(Unit=mm)

> Specifications

ORing Media Converter	IUSB-9041-WG
Physical Ports	
10/100Base-T(X) Port in RJ-45 Auto MDI/MDIX	1
USB Ports	
Connector	USB 2.0 x 4
Operation Mode	1.0 / 1.1 / 2.0 support
WLAN Feature	
Operating Mode	Client mode
Antenna Connector	Reverse SMA
Radio Frequency Type	DSSS
Modulation	IEEE802.11b: CCK, DQPSK, DBPSK IEEE802.11g: OFDM with BPSK, QPSK, 16QAM, 64QAM
Frequency Band	America/FCC: 2.412~2.462 GHz (11 channels) Europe CE/ETSI: 2.412~2.472 GHz (13 channels)
Transmission Rate	IEEE802.11b: 1/ 2/ 5.5/ 11 Mbps IEEE802.11g: 6/ 9/ 12/ 18/ 24/ 36/ 48/ 54 Mbps
Transmit Power	IEEE802.11b/g: 18dBm
Receiver Sensitivity	-81dBm @ 11Mbps, PER< 8%; -64dBm @ 54Mbps, PER< 10%
Encryption Security	WEP: (64-bit ,128-bit key supported) WPA: WPA2 : 802.11i(WEP and AES encryption) PSK (256-bit key pre-shared key supported) TKIP encryption
Networking	
OS support	Windows 2000, XP, 2003, Vista
TCP/IP	IP, ICMP, ARP, RARP, TCP, UDP, HTTP
Browser	IE 6.0 or above
LED Indicators	
Power indicator	Power LED x 3
Ready indicator	Green for ready
WLAN indicator	Green : WLAN Link/Act.
Relay indicator	Amber for fault relay
10/100TX RJ-45 port indicator	Green for port Link/Act. Amber for data transmitted.
USB indicator	Green for USB port activated
Fault contact	
Relay	Relay output to carry capacity of 1A at 24VDC
Power	
Input Power	Triple DC inputs. 12 ~ 48 VDC on 6-pin terminal block and power jack
Power Consumption (Typ.)	TBD

Physical Characteristic	
Enclosure	IP-30
Dimension (W x D x H)	26.1(W) x 94.9(D) x 144.3(H) mm (1.03x3.74x5.68 inch.)
Weight (g)	TBD
Environmental	
Storage Temperature	-40 to 85°C(-40 to 185°F)
Operating Temperature	-10 to 60°C (14 to 140°F) Extended temperature model (-40 to 70°C, -40 to 158°F, -T model)
Operating Humidity	5% to 95% Non-condensing
Regulatory approvals	
EMI	FCC Part 15, CISPR (EN55022) class A
EMS	EN61000-4-2 (ESD), EN61000-4-3 (RS), EN61000-4-4 (EFT), EN61000-4-5 (Surge), EN61000-4-6 (CS), EN61000-4-8, EN61000-4-11
Shock	IEC60068-2-27
Free Fall	IEC60068-2-32
Vibration	IEC60068-2-6
Safety	EN60950
Warranty	5 years

> Ordering Information

IUSB-9 **A****A****B**-**C**

Code Definition	Serial Port Number	10/100TX Port Number	Operating Temperature
Option	- 04: 4 port	- 1: 1 port	- WG : IEEE 802.11 b/g mode

Available Model	Model Name	Description	Operating Temperature
	IUSB-9041-WG	Industrial 4-port USB2.0 to 802.11 b/g and 1-port 10/100TX IP USB Server	Regular model (-10 to 60°C)